

TVR

THIBAUT VAN RENNE



INDOOR COLLECTION



WELCOME TO
THE WORLD OF
THIBAUT
VAN RENNE

TVR

THE STORY OF TVR

Thibault Van Renne is a haute-couture carpet design studio. Renowned for unique designs combining tradition and contemporary design, attention to detail and expertise in subtle color combinations, the studio elevates the design of the contemporary rug. Handmade, indeed hand-knotted, by the finest Rajasthani artisans perfecting centuries-old methods – each rug is made from hand-spun wools and silks of the highest quality, hand dyed according to each rug's specifications.

The haute-couture approach and dedication of Creative Director Thibault Van Renne means that he selects and oversees the whole process, from the selection of the

threads to placing the rug in clients' homes. At his studio in Ghent, Belgium new collections are born and designs customized.

Following a family tradition, Thibault Van Renne, established the brand in 2006, and since then has successfully challenged the notion of the rug through innovation, unique artistic designs, and by employing an ethical and fully transparent craftsmanship process. Today the Van Renne carpets complete fine homes from European royalty to penthouses of the Far Orient.



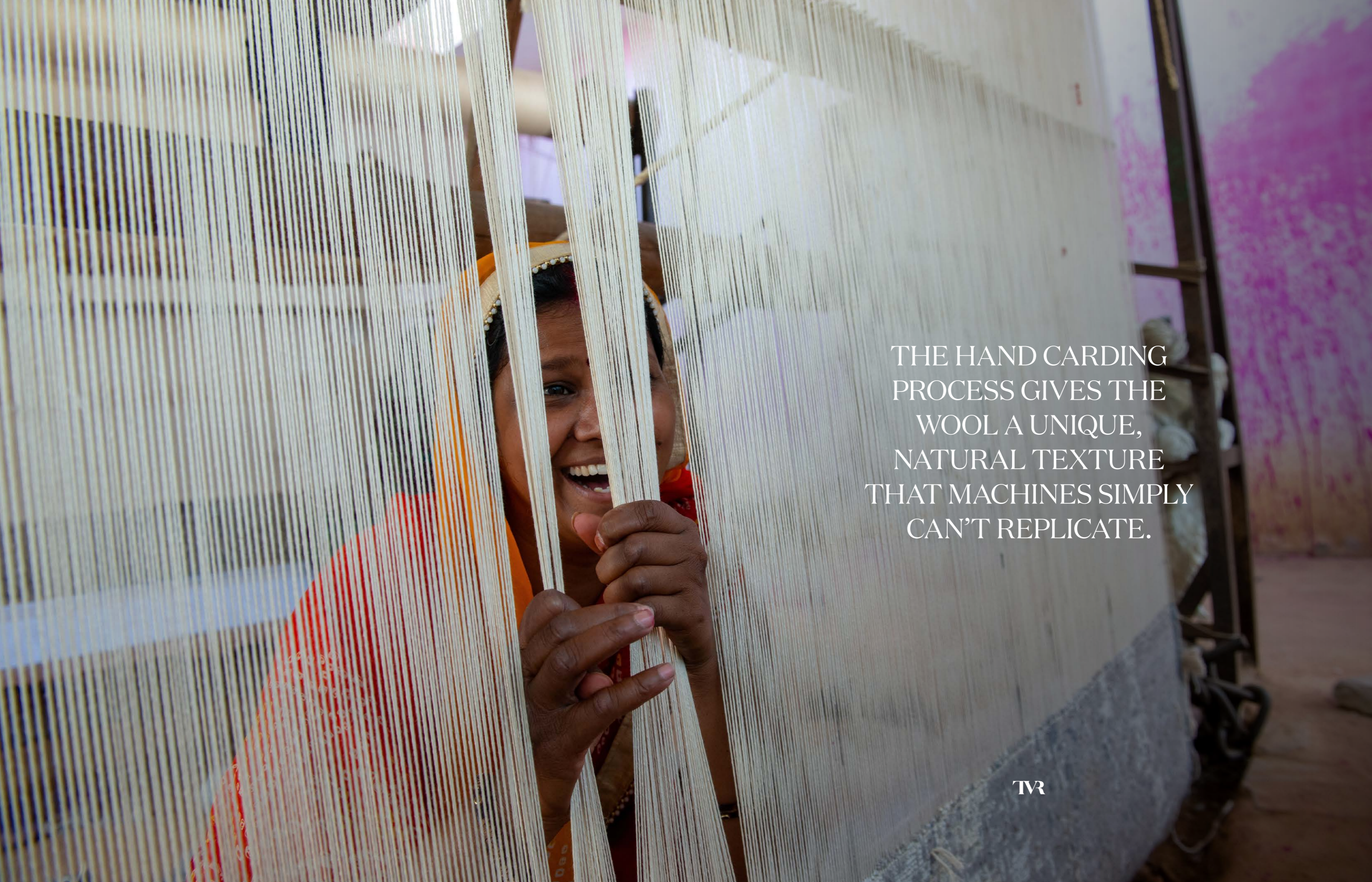


MEET THE DESIGNER

As the son of a carpet dealer, Thibault Van Renne has travelled to the Middle East since childhood, looking for unique pieces. This aesthete par excellence grew up under the sign of craft and refinement. In 2006, Thibault Van Renne launched an eponymous label for luxury carpets that revolutionized the market: unparalleled patterns and colors create a bridge between past and present, totally obliterating prevailing views on carpet from the collective memory. His carpets are there to prove that computer technology and pure craft are indeed compatible.

Thibault Van Renne doesn't just propose design; he is above all a designer. He draws inspiration from interior design trends, as well as from the art and fashion scene. His creations are invariably made from natural materials and manufactured by skilled weavers in the Middle East. They meet the highest quality standards. With his support to the organization "Care & Fair", Thibault Van Renne shows his commitment to corporate social responsibility, as well as sustainability offering a 100% biological washing process using sapindus soap nuts. He has already clinched four nominations for the prestigious Carpet Design Awards: three in the category Best Innovation and once for best traditional collection.

Today, TVR has become a well established and known brand worldwide. After an increasing demand for outdoor carpets, and seeing a gap in the market, TVR now provides hand made outdoor rugs and furniture, both custom made.



THE HAND CARDING
PROCESS GIVES THE
WOOL A UNIQUE,
NATURAL TEXTURE
THAT MACHINES SIMPLY
CAN'T REPLICATE.

TVR

THE JOURNEY OF YOUR LUXURY RUG

01



DESIGN PROCESS

It takes a long time and a lot of effort to create unique design that is different, yet timeless and classy, so it will not bore your eyes. The extreme difficulty of the design pushes the knotters to the limits of their craft. And that's precisely what Thibault Van Renne is striving for: time and time again pushing the limits of the possible further to create pieces of a controversial beauty. "Aiming for legendary".

02



HAND CARDING

After the wool has been carefully selected, it is then hand carded. Carding is a process that disentangles, cleans and intermixes fibers to produce a continuous woolen thread with well spread variations in natural color tones. It breaks up the locks of the woolen fibres and then aligns the individual fibers to be parallel with each other. This is achieved by passing the fibers between differentially moving rectangular paddles covered with card clothing. As in many things, nothing compares to the finesse of something produced by hand.



03

HAND SPINNING

After hand carding, our wool is handspun. Because the wool was already hand carded, it simplifies the process of hand spinning. The natural irregularity of the thickness in the handspun thread makes the uniqueness of each rug, as when soaked in dye, handspun yarn absorbs less where it is spun tightly and more where it is spun loosely. Without meaning to, the spinners have created yarn that, when dyed, is never uniform in color. That's what creates the beauty of our rugs. Another practical effect is the fact that there is another selection of the fiber, as only the best fiber is spun on the woolen thread when it's handspun. Also all our silk fiber is handspun.

04



DYEING

After being hand-carded and hand-spun, our yarns are dyed, by attaching the skeins of yarn to a wheel. This wheel goes through a large boiler with a boiling mixture of water, dye and binding agent. Because this is done by hand, the yarn absorbs dye unevenly. This results in subtle colour differences in the yarn.

05



HAND KNOTTING

The dyed yarns are gathered at the loom. Several knotters work side by side for 6 months (up to 8 months, depending on the design), knot after knot, to complete the design into a whole. They follow a plan on graph paper where each square represents a knot. It's comparable to a computer screen, where each pixel represents a knot that is part of the composition of the design.

06



WASHING

Our washers splash the rug with lots of water and mild soap and go over the rugs with paddles. This makes the rug more supple and improves soap efficiency in creating sheen and luster on the rug.

07



DRYING

The rug is then dried on the roofs of the many buildings in and around the surrounding washing area. They leave the rug an extra 2 days in the sunlight as this further enhances the sheen and lustrous look.

08



SHAVING

After being dried, the rug is shaved to a normal pile height. The shaving machine is held by hand, which makes this technique quite a tricky process as the exact same pressure should be applied everywhere so the pile height is identical all over the rug. Should anything go wrong, the carpet is lost.

09



STRETCHING

The carpet is then being taken for stretching. It is being outlined on a metal or wooden frame where it stays for a few days to make sure the rug is 100% straight.



10

HANDCARVING

The last step is handcarving. During this process the background part of the design is cut out by hand with scissors. This is done by a team of craftsmen to create a unique 3D effect, resulting in extraordinary detail. We take it to the next level and create rugs with the finest and best handcarving ever performed. The detail of our design continues in the handcarving. People with no knowledge of rugs hardly believe everything we do is done by hand. But it is. We are aiming for legendary.



EVERY KNOT IS
METICULOUSLY TIED BY
HAND, REPRESENTING
MONTHS OF DEDICATION
AND CRAFTSMANSHIP.



ELEGANCE - BEIGE MULTI 4557



ELEGANCE - NATURAL SILVER 1100



SPACES - TT MOUNTAIN GREY RED



SPACES - SKY SCRAPER



RELINED COLLECTIE





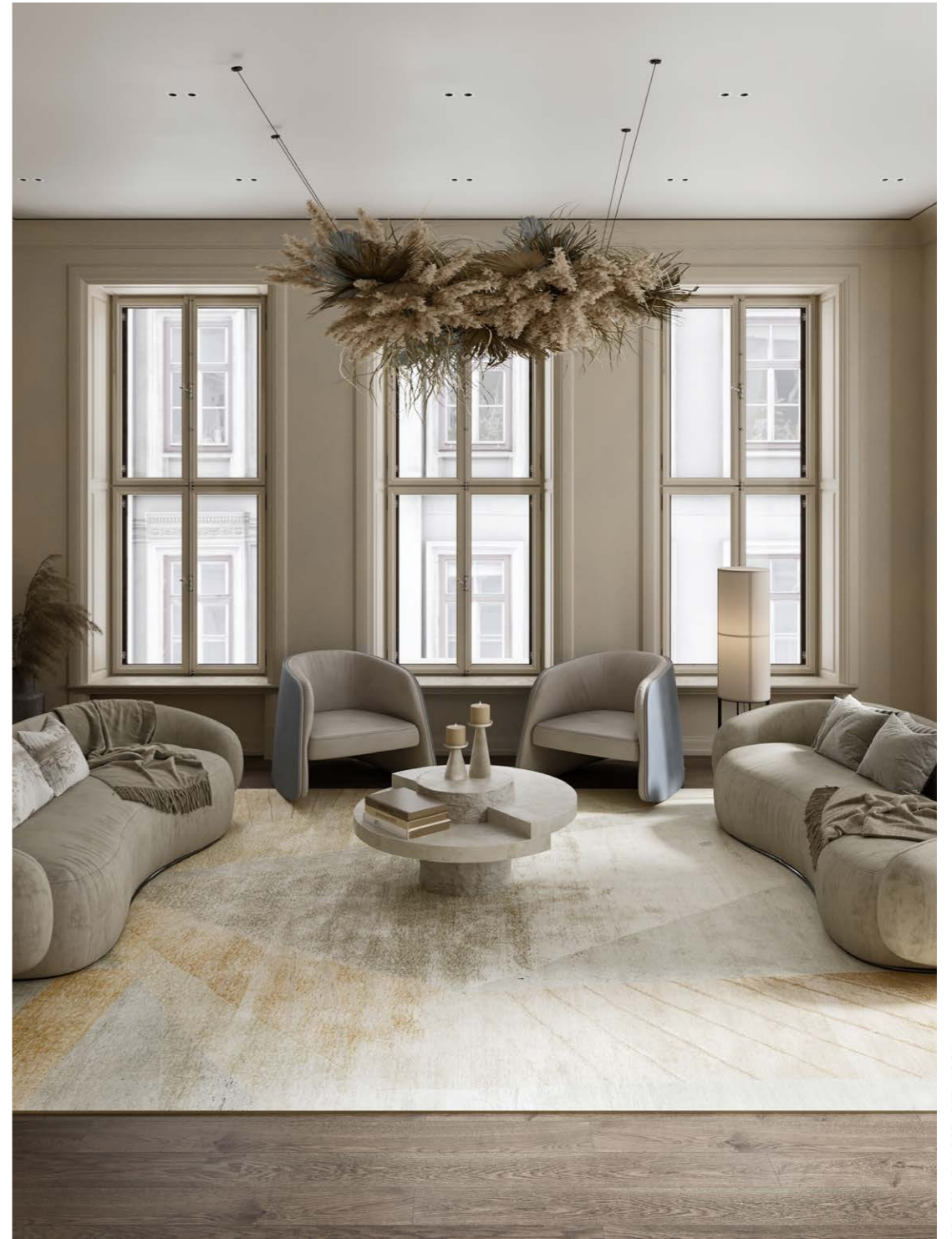
SPACES - SPLASHES 05 - WOOL SILK LINEN MIX





RELINED - 10857A - IVORY GOLD

INDOOR COLLECTION



SPACES - SKY SCRAPER WOOD



SPACES - SHOCK 03 MULTI



SPACES - SHOCK 03 MULTI

SPACES - SHOCK 03 MULTI





SPACES - TT MOUNTAIN BLUE



SPACES - CAMEO FLOW 4 MULTI







SPACES - IMAGINATION





SPACES - R SOFT 9

INDOOR COLLECTION



SPACES - TT MOUNTAIN BLUE







SPACES - FLOWS 02

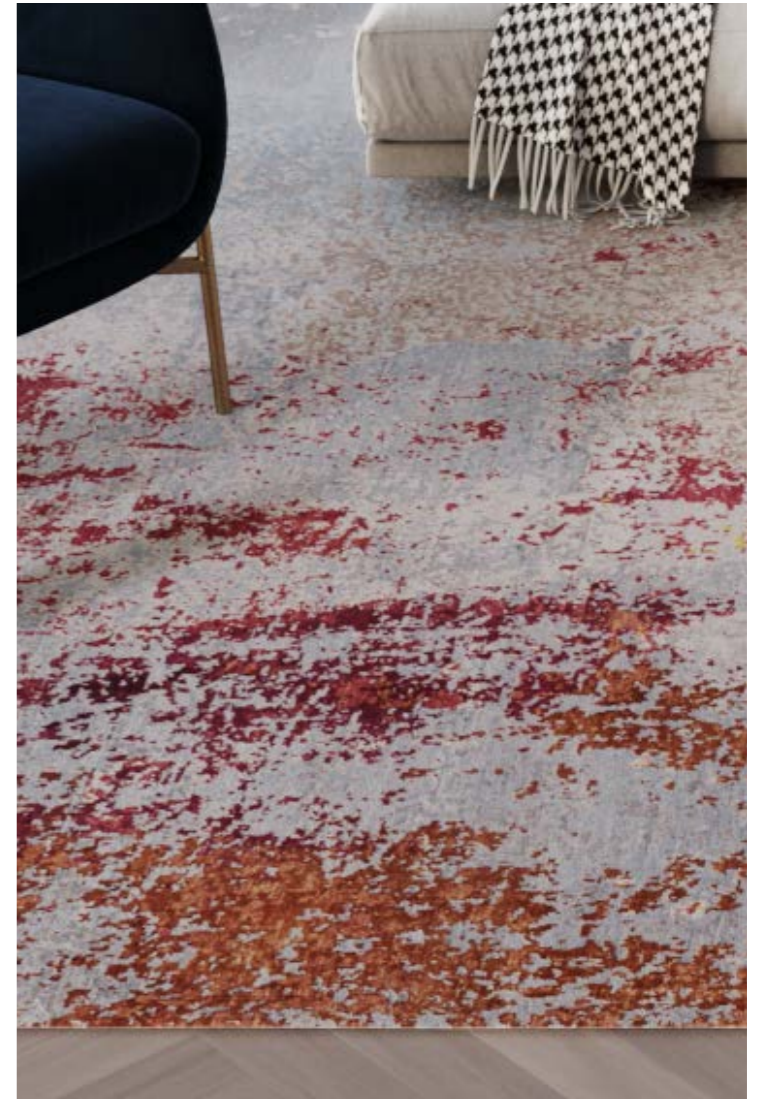


SPACES - FLOWS 02





SPACES - R SOFT 9











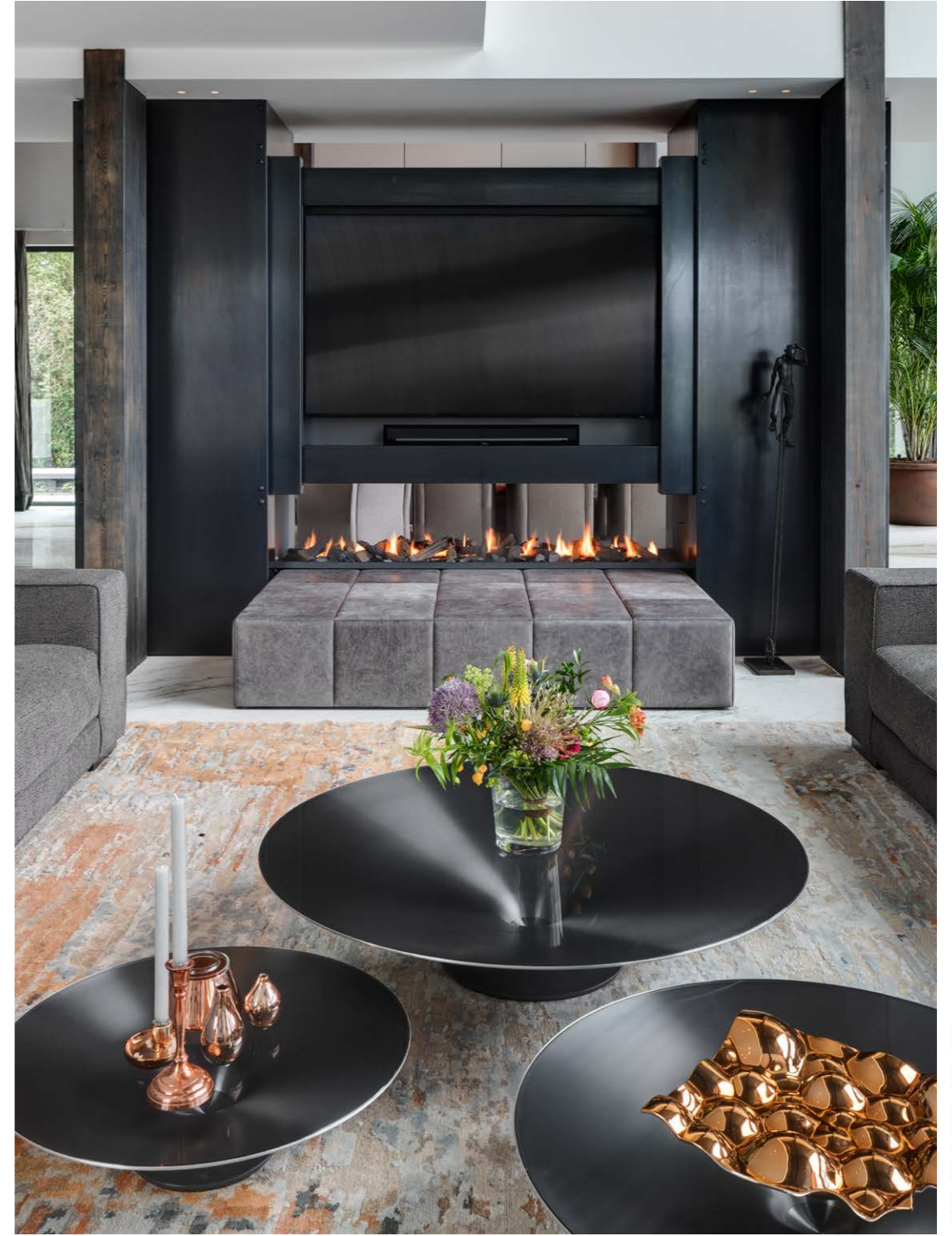
YOGAMA - 4D2 - TURQUOISE



ARTLINE - RVB3



ABSTRACTS 5 - TERRACOTA GREY



ABSTRACTS 5- TERRACOTA GREY



ABSTRACTS 5 - TERRACOTTA GREY



ABSTRACTS

INDOOR COLLECTION



THE PATTERN - BLUE



ABSTRACTS 6 - TUROUOISE BEIGE





ANCIENT 4 - BROWN GREY



GRUNGE - DQ5 - GOLD CHARCOAL





ANCIENT - 6C1 - MULTI



GRUNGE - ICE BLUE - D0S2





IMMERSIVE — ICEBERG STRUCTURES PINK



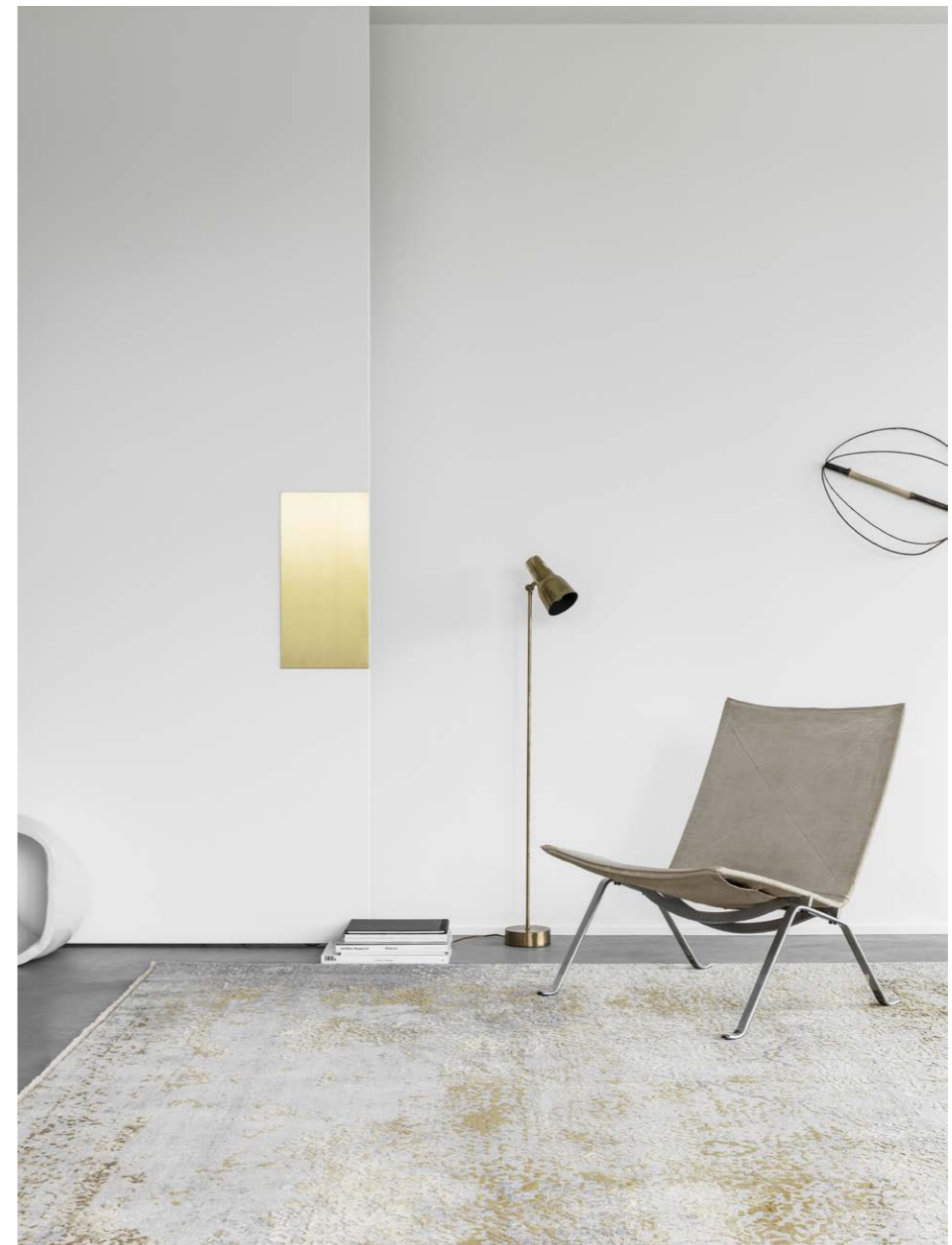
INDOOR COLLECTION



ABSTRACTS 4 - RED



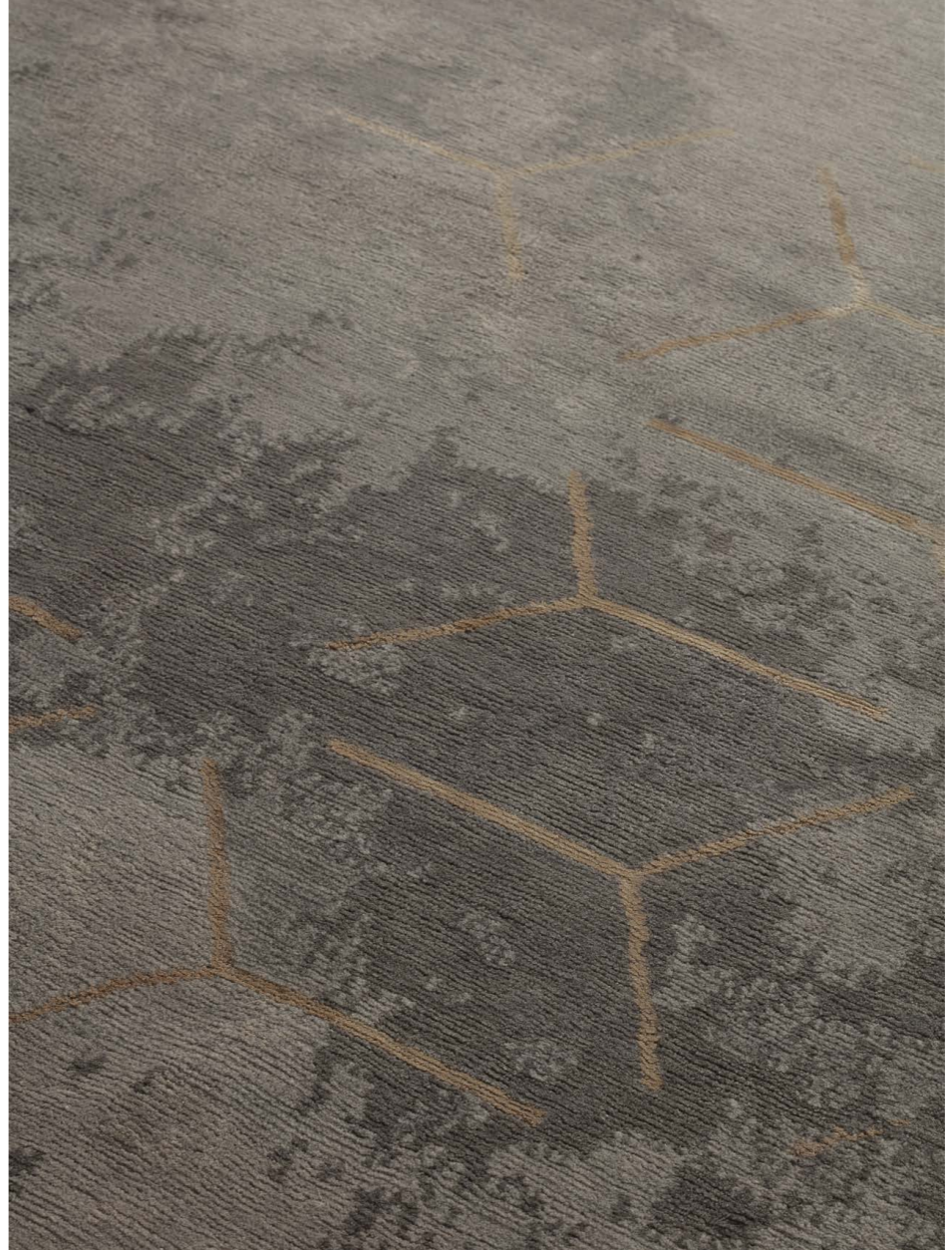
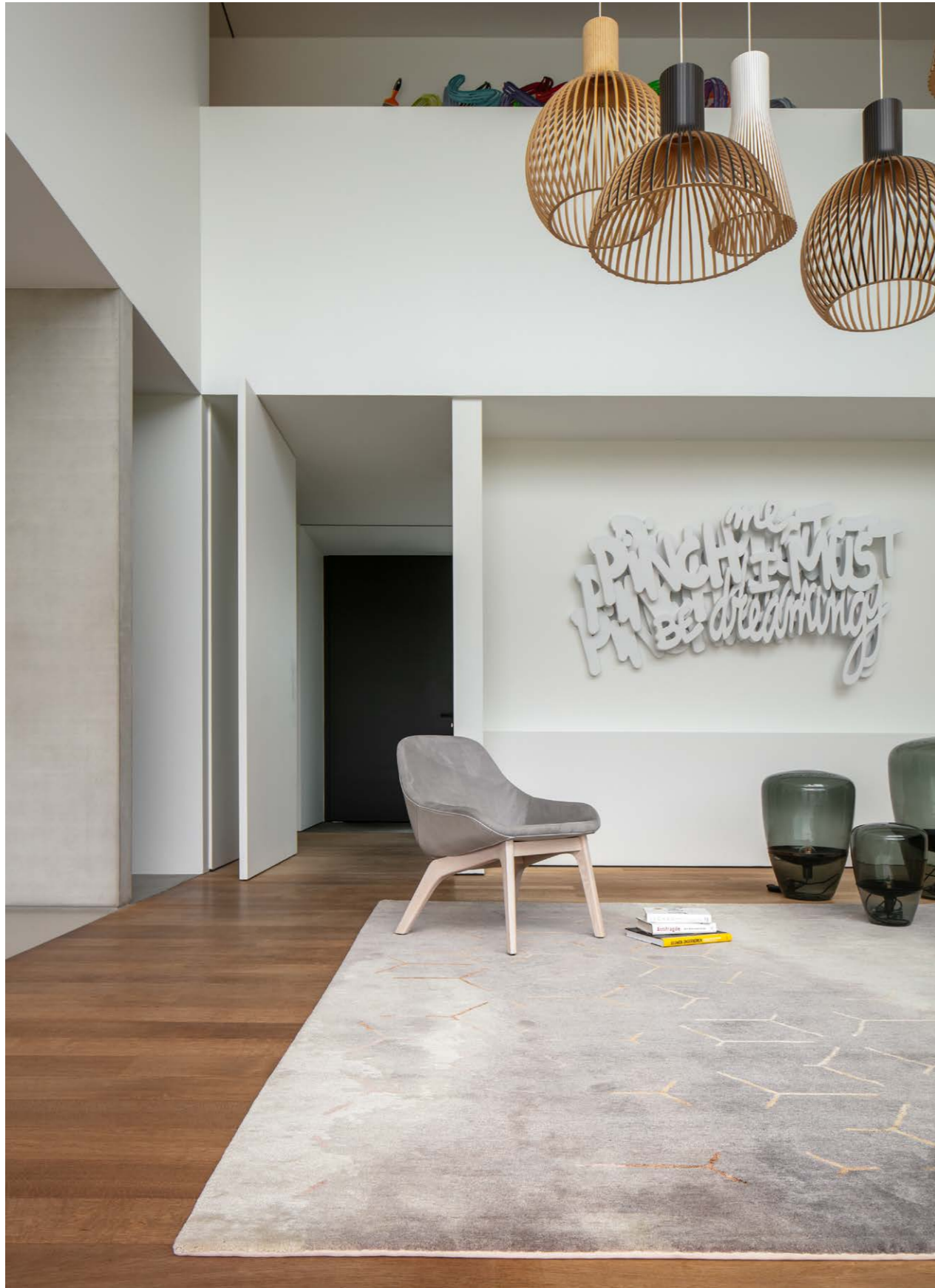
RUGS THAT WITHSTAND THE TEST OF TIME.
TIMELESS DESIGN AND SUBTLE COLOR NUANCES
CREATE FOR LEGENDARY MASTERPIECES.



VIVIANE - VIV9 - GREY BLUE



ANCIENT 2A - CHARCOAL



TAILLIGHTS - NH06B - GREY



ANCIENT - 6C1 - MULTI

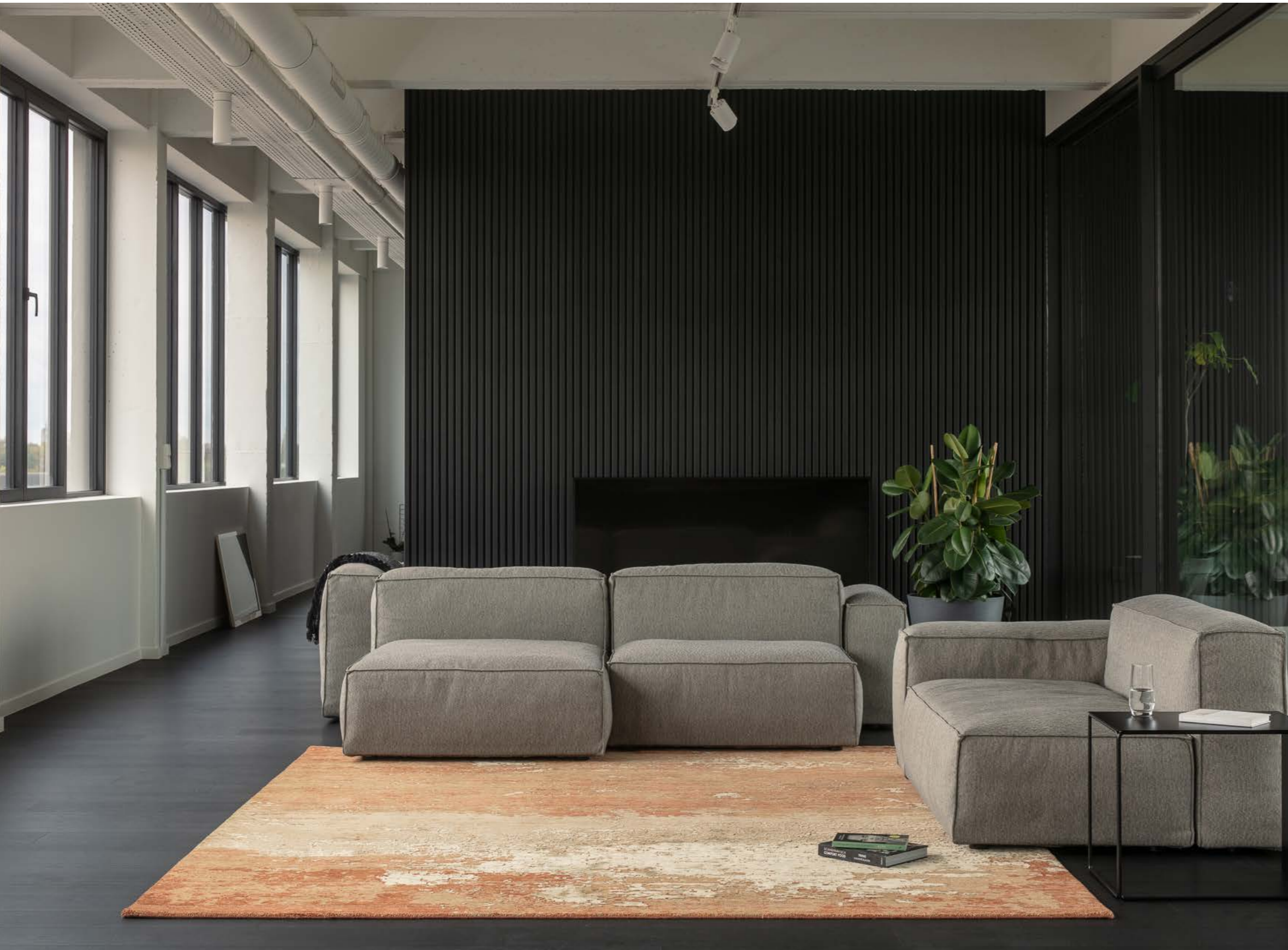




ANCIENT 2A - GREY

ANCIENT 2A - GREY





GRUNGE - D052 - NEW BROWN RUST



AUTUMN - GREY GOLD

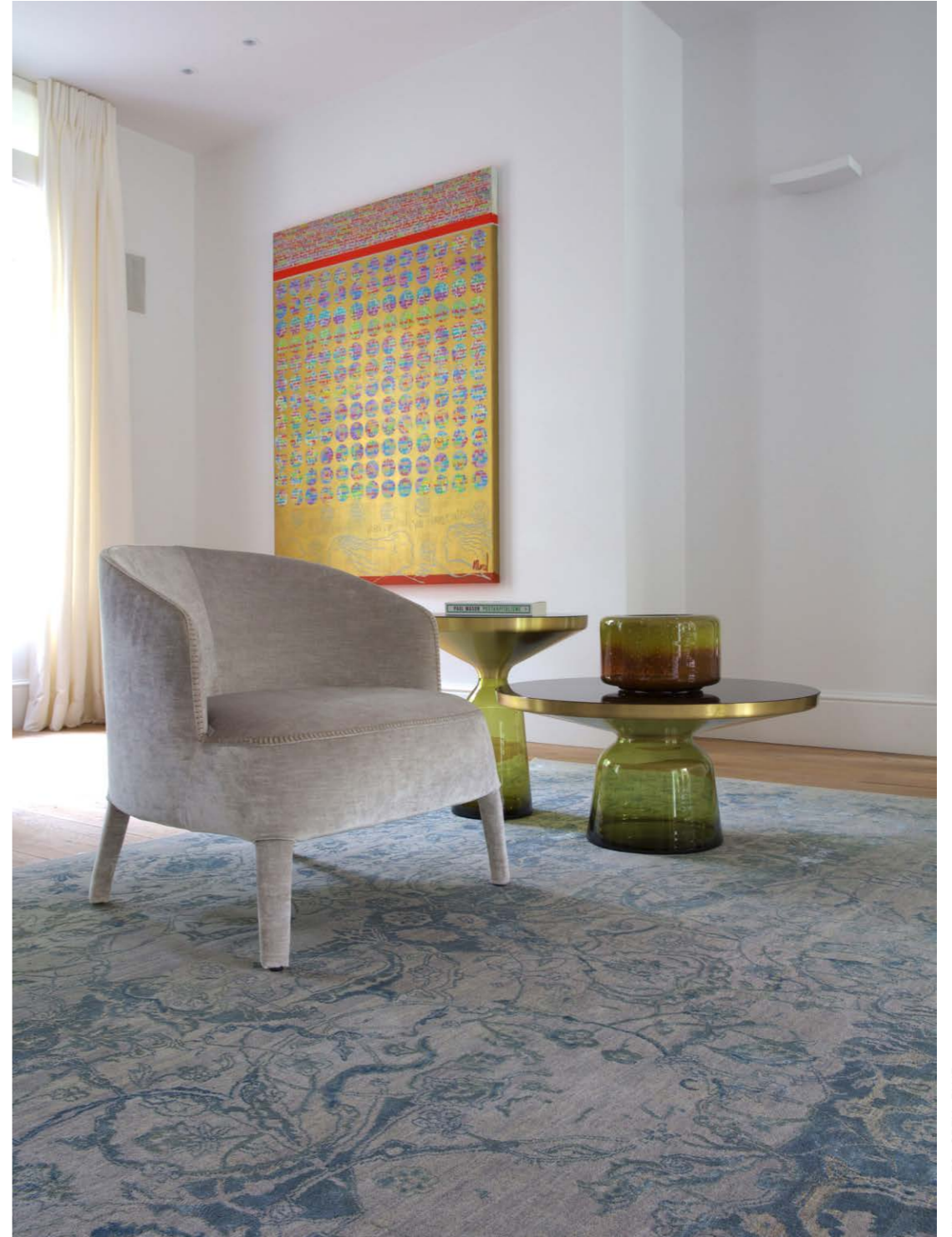


GRUNGE - DQZS - NEW BROWN RUST



ELEMENTS - STAR BORDER - GREY





VIVIANE - F6 - GREY - BLUE

VISUAL 2A - GREY BLUE



INSPIRATIONS - T3 - GREY ORANGE



ELEMENTS - SAVONNERIE - PINK PURPLE



AUTUMN - GREY GOLD



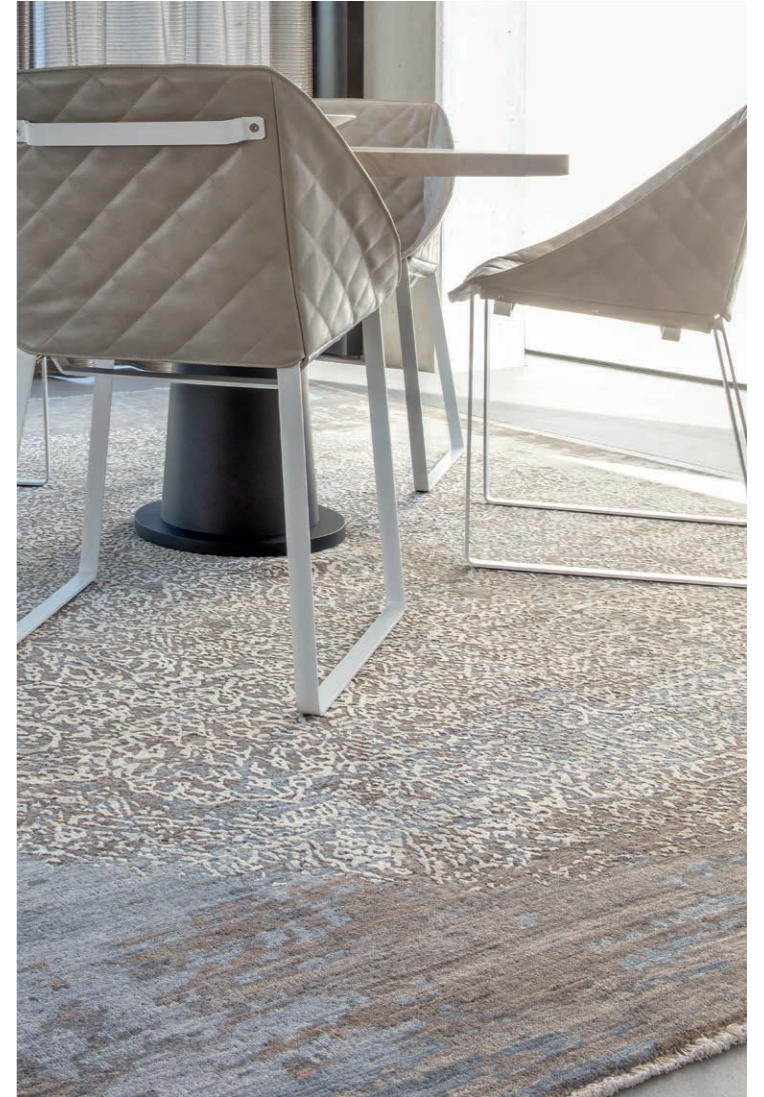
AUTUMN - GOLD PURPLE



AUTUMN - GREY GOLD

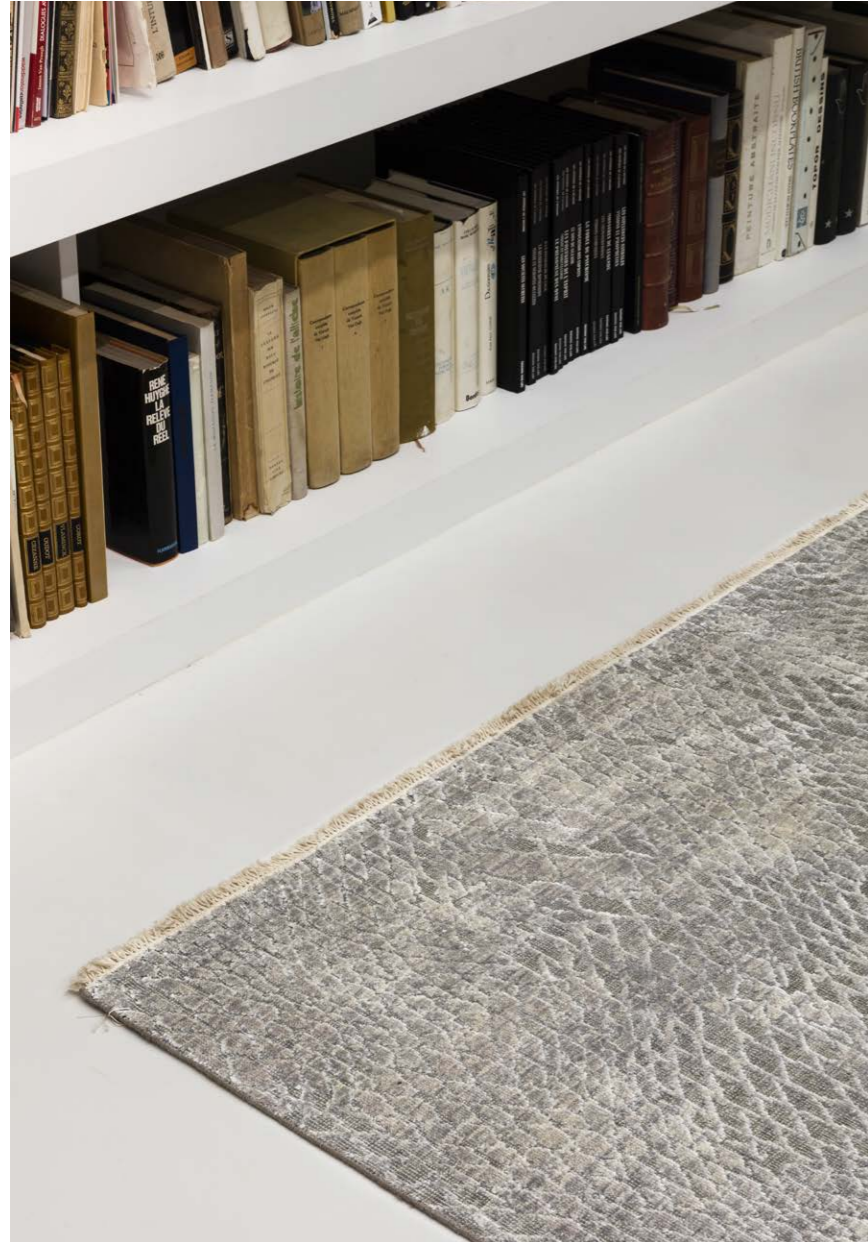


SIENA - GREY BLUE





INSPIRATIONS.- T-7-B - LT GREY 2119-60 - LILACS MULTY



ARTLINE 19 - SNK4



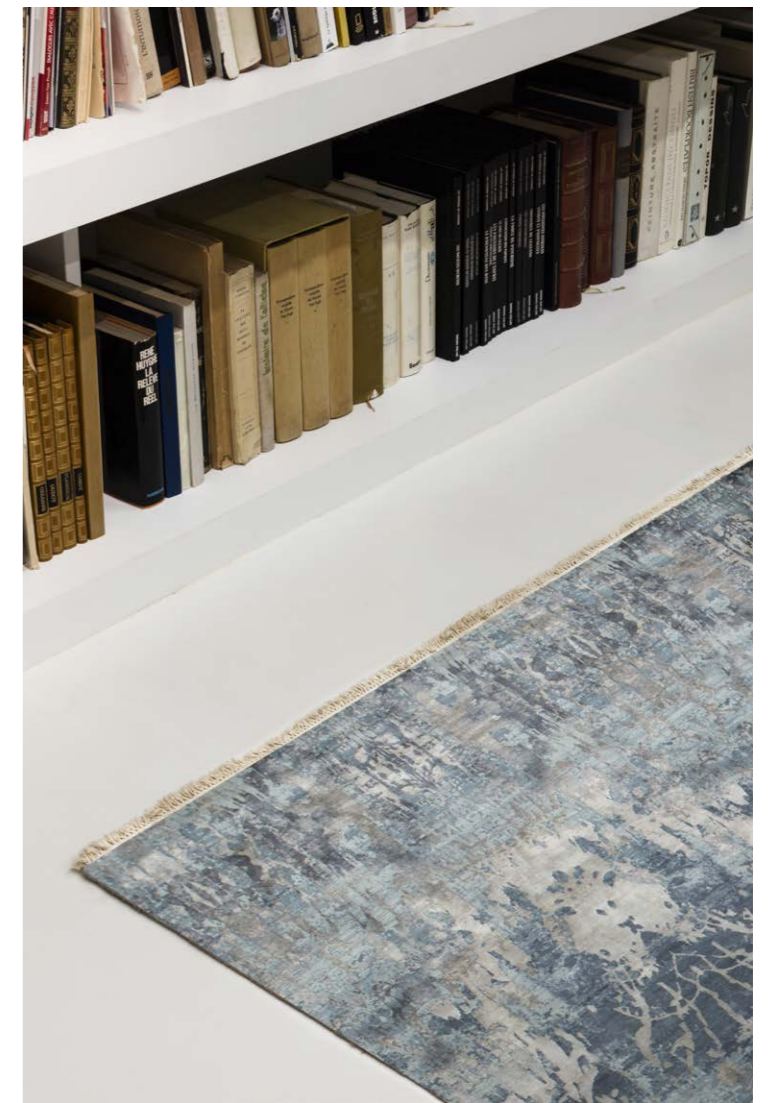
ARTLINE G1 - P1-P4



IMPRESSIONS - GREY BLUE



IMPRESSIONS - PURPLE



IMPRESSIONS - AQUA



ANCIENT - 6C2 - MULTI



ARTLINE G1- P1-P4





ARTLINE - 1506 - DP3



KASHMIR BLAZED - 6117 - GREY ORANGE



RELINED - 9982A - NATURAL



AUTUMN - GOLD - PURPLE



RELINED - 9982A - NATURAL



ARTLINE G1 - P1-P4



ELEMENTS - SMOKED LEAF - BLUE GOLD



ANAMIKA - BROWN



NATURE - BORDER 4



TVR

ELEGANCE

Discover 'Elegance'

Our Exquisite Hand-Knotted Rugs in Wool and Bamboo Silk, Featuring 90,000 Knots per m² for Unmatched Quality and Elegance. Customizable in Any Size with a Remarkable Production Time of Just 4 Months.

FROM 650 EUR/M²



ELEGANCE - BEIGE GOLD 10834



ELEGANCE - SILVER IVORY 11774



ELEGANCE - NATURAL SILVER 12038



ELEGANCE - NATURAL MULTI 12475



ELEGANCE - NATURAL SILVER 11947



ELEGANCE - NATURAL SILVER 1100



ELEGANCE - SILVER SILVER 12929



ELEGANCE - SILVER BEIGE 11962



TR

SPACES

Abstract expressions on 3D virtual architectural spaces created this natural looking collection with vibrant colors.

FROM 1695 EUR/M²



SPACES - TT MOUNTAIN BLUE



SPACES - SHOCK 01 WTL WOOL SILK LINEN



SPACES - FLOWS 04



SPACES - FLOATING GOLD CP100



SPACES - FLOWS02



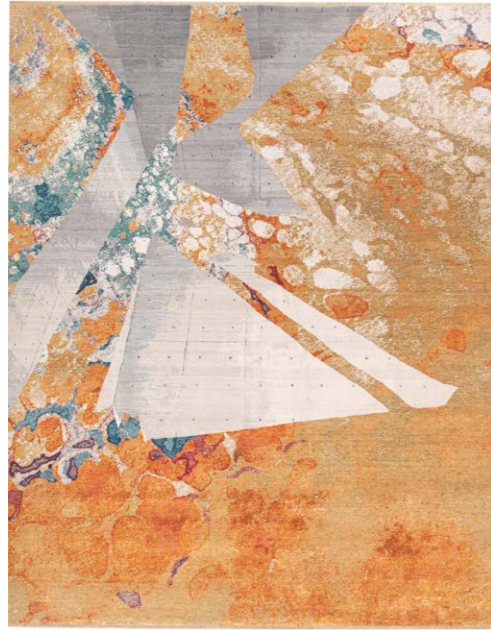
SPACES - FUZZY FRAGMENTS



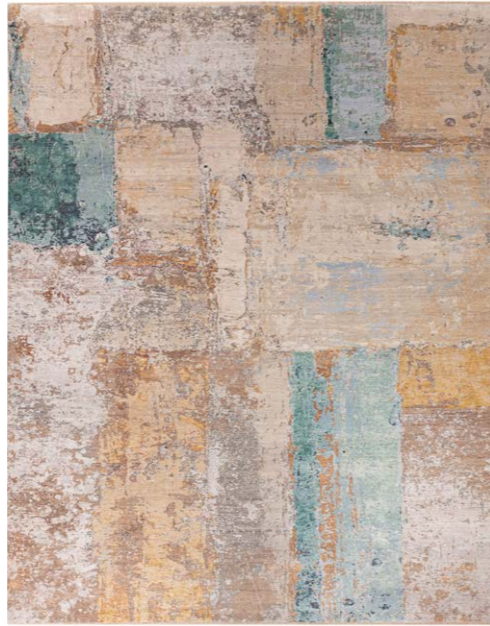
SPACES - SKY SCRAPER WOOD VKSP



SPACES - SKY SCRAPER 01 ORANGE



SPACES - SHOCK 04



SPACES - IMAGINATION



SPACES - MOUNTAIN GREY GOLD CP187



SPACES - SHOCK 03



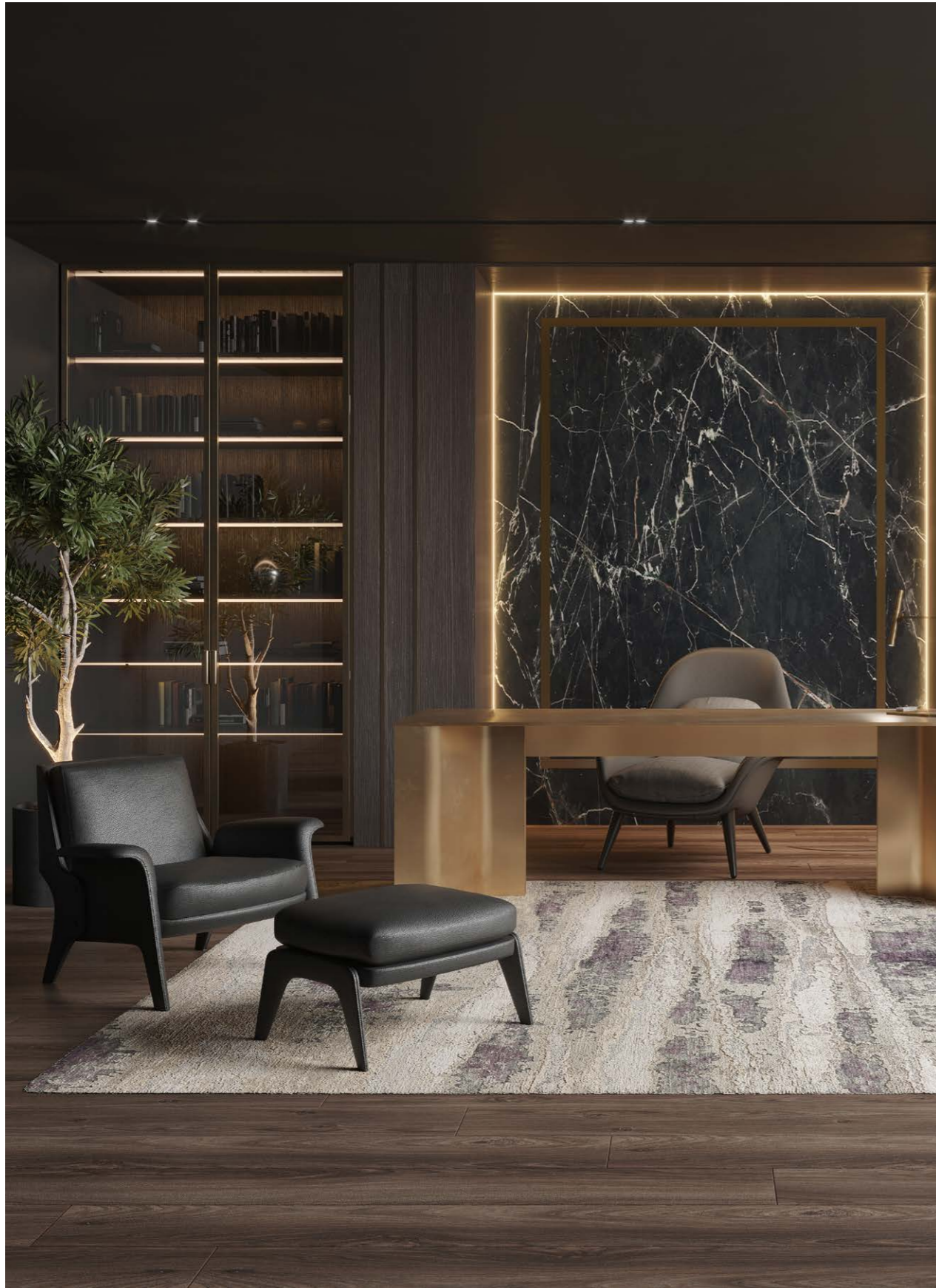
SPACES - SHOCK 01



SPACES - R SOFT 9



SPACES - SPLASHES 05 WTL WOOL SILK LINEN



AVIO

AVIO

TR

AVIO

Enticing and sparkling, modern collection
for contemporary interiors.

FROM 895 EUR/M²



AVIO - 1919-SILVER GREY



AVIO - AV-02-GREY SILVER



AVIO - MOUNTAIN GREY GOLD CP187



AVIO - AV-02-GREY



AVIO - AV-05-IVORY BLUE



AVIO - AV-02-INK BLUE



AVIO - SHA-12-SILVER BLUE



AVIO - AV-05-BEIGE GOLD



AVIO - RN79



YOGAMA

TR

YOGAMA

YOGAMA

Innovative techniques woven in natural
silk for an understated luxury.

FROM 1600 EUR/M²



YOGAMA - 4-D2 TURQUOISE



YOGAMA - 3 - WHITE



YOGAMA - 4565 IVORY-SAND



TR

GRUNGE

Bringing destructed wall design to the highest level of quality and detail.

FROM 1495 EUR/M²



GRUNGE - RED RUST BROWN



GRUNGE - GREEN GREY SUITE



GRUNGE - SPANISH WHITE D2HS 42



GRUNGE - TWO SLATE



GRUNGE - SEA BLUE



GRUNGE - RED ROBIN



GRUNGE - GOLD



GRUNGE - NEW GREY



GRUNGE - ICE BLUE

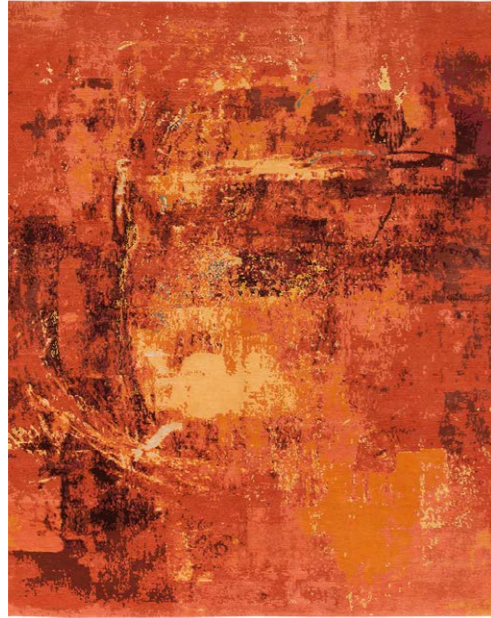


TR

ABSTRACTS

Abstract patterns
produced in Nepal.

FROM 1400 EUR/M²



ABSTRACTS - 1 RED



ABSTRACTS - 5 RED



ABSTRACTS - 1 BEIGE



ABSTRACTS - 4 RED



ABSTRACTS - 5 TERRACOTTA GREY



ABSTRACTS - 6 SILVER



ABSTRACTS - 7 OP2



ABSTRACTS - OP3 AQUA



ABSTRACTS - 7 OP2



ABSTRACTS - OP3 AQUA



ABSTRACTS - 6 TURQUOISE BEIGE



ABSTRACTS - 1 BLACK



ABSTRACTS - 8 ORANGES



ABSTRACTS - 6 PURPLE MULTI



ABSTRACTS - 1 GREY



ABSTRACTS - 4 BLUE



ABSTRACTS - 5 BLUE



ABSTRACTS - 8 GREY SILVER



ABSTRACTS 6 - SILVER



ABSTRACTS - 4 LEMON

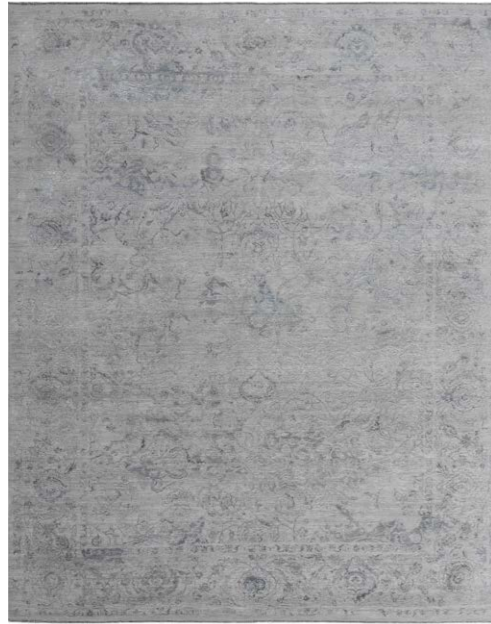


TR

VIVIANE

Timeless elegance.

FROM 1695 EUR/M²



VIVIANE - F6 & F1 GREYS



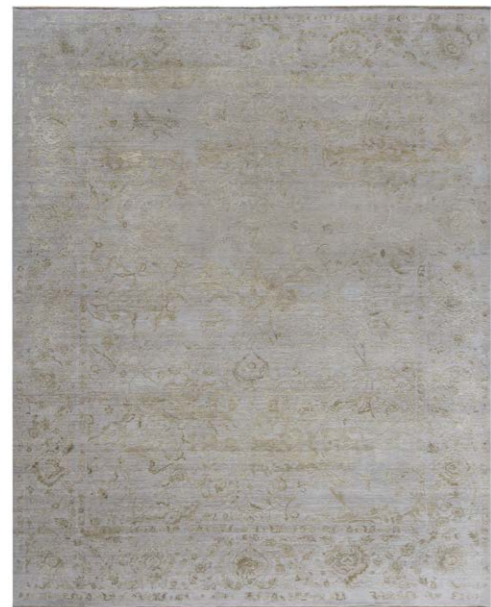
VIVIANE - VIV9 SNK4 GREY



VIVIANE - F6



VIVIANE - VIV9 F1 GREY



VIVIANE - F6 & F17 BRASS



VIVIANE - VIV9 OC52A



VIVIANE - VIV9 O46



VIVIANE - VIV9 GREY TURQUOISE



VIVIANE - VIV9 OC52A



VIVIANE



VIVIANE - VIV9 F5



TVR

ARTLINE

An artistic play of lines
to create unique and simple,
yet attractive patterns.

FROM 1495 EUR/M²



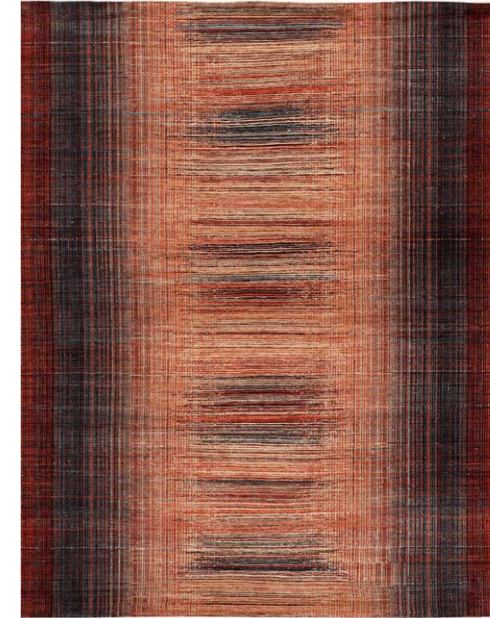
ARTLINE - RVB2



ARTLINE - RVB3



ARTLINE - VB-1



ARTLINE - RVB7



ARTLINE - 18 - P1-P4



ARTLINE - 19 - SNK4



ARTLINE - 22 - BEIGE



ARTLINE - G1 - P1-P4



ARTLINE - TX3-C MULTICOLOR



ARTLINE - 1506 BEIGE



ARTLINE - V2296 - BEIGE



ARTLINE - 1506 DP-3



ARTLINE - ARROWS



ARTLINE - STRUCTURES GREY



TR

THE PATTERN

A play of parallel lines forming a
symmetrical pattern.

FROM 1495 EUR/M²



THE PATTERN - MULTI



THE PATTERN - BLUE



THE PATTERN - BEIGE



TR

RELINED

Modern fiber combinations in
abstract inspired designs.

FROM 950 EUR/M²



RELINED - 9749-D - NATURAL GREEN



RELINED - 9863B IVORY CHARCOAL



RELINED - 9789-F NATURAL



RELINED - 10106-D SILVER BLUE



RELINED - 9982A NATURAL



RELINED - 9982B IVORY GREY



RELINED - 9862B SILVER BLUE



RELINED - 9864 A - NATURA



RELINED - 10047 C GREY



RELINED - 10102B GOLD



TR

IMMERSIVE

The next step in
transitional design.

FROM 1695 EUR/M²



IMMERSIVE - GOLDEN ORCHID - PURPLE BLUE



IMMERSIVE - GOLDEN ORCHID PURPLE GOLD



IMMERSIVE - AQUAREL PURPLE



IMMERSIVE - FIELDS - GREY PINK



IMMERSIVE - ICEBERG - SIMPLE - GREY PINK



IMMERSIVE - FRESCO TURQUOISE



IMMERSIVE - VISPAN GREEN PURPLE



IMMERSIVE - WALL BEIGE



IMMERSIVE - ICEBERG BROWN BLUE



IMMERSIVE - RED GOLD



IMMERSIVE - ICEBERG BLUE PINK



IMMERSIVE - RESHAM GREY



IMMERSIVE - GOLDEN ORCHID BROWN BLUE



IMMERSIVE - TRED GREY GOLD



IMMERSIVE - REVOLUTION GREY



IMMERSIVE - ICEBERG PURPLE



TVR

TAILLIGHTS

Expressive. Temperamental. Enticing.
The “Taillights” line pays tribute to the dichotomous nature of the power and grace that Italian sports cars exhibit and inspired Thibault Van Renne for this latest collection in collaboration with Nathan Haetty.

FROM 1400 EUR/M²



TAILLIGHTS - NH03 GREY BLUE ORANGE



TAILLIGHTS - NH04 GREY MULTI



TAILLIGHTS - NH01 ORANGE GOLD



TAILLIGHTS - NH06 GREY SILVER



TAILLIGHTS - NH06B GREY ORANGE



TVR

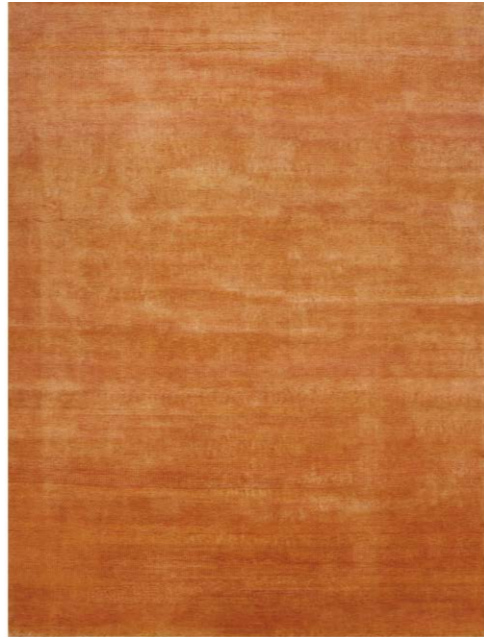
KASHMIR

The ultimate quality.

FROM 650 EUR/M²



KASHMIR - ROMAN GREY



KASHMIR - ABRIKOOS



KASHMIR - LIGHT BLUE



KASHMIR - RUST



KASHMIR - NATURAL



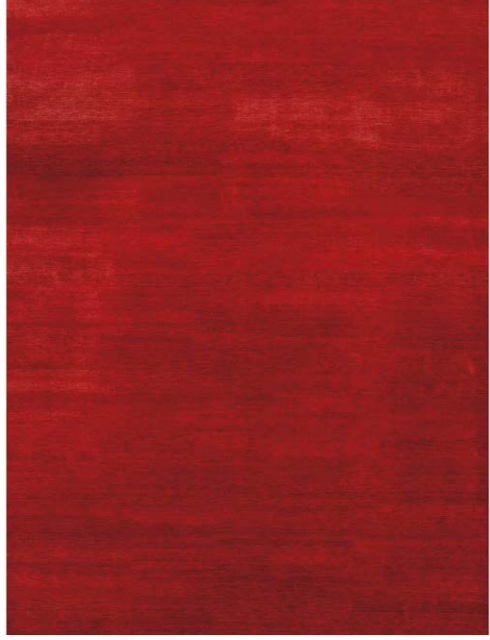
KASHMIR - ANTRACIET



KASHMIR - MEDIUM BLUE



KASHMIR - PURPLE



KASHMIR - RED



TR

KASHMIR BLAZED

Kashmir wool with bamboo silk
in fashionable colors.

FROM 750 EUR/M²



KASHMIR BLAZED - ORANGE



KASHMIR BLAZED - SKY BLUE



KASHMIR BLAZED - DARK BLUE



KASHMIR BLAZED - BURN RUST



KASHMIR BLAZED - PINK



KASHMIR BLAZED - FAST ORANGE



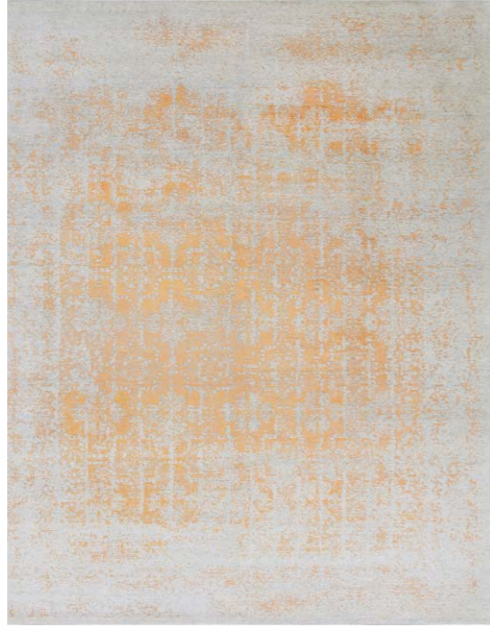
KASHMIR BLAZED - AQUA BLUE



KASHMIR BLAZED - APPLE GREEN



KASHMIR BLAZED - STEEL GREY BLUE



KASHMIR BLAZED - ORANGE



KASHMIR BLAZED - GL406



TR

ELEMENTS

The literal and figurative
interweaving of classic elements
from different cultures.

FROM 1695 EUR/M²



ELEMENTS - SMOKED LEAF BLUE GOLD



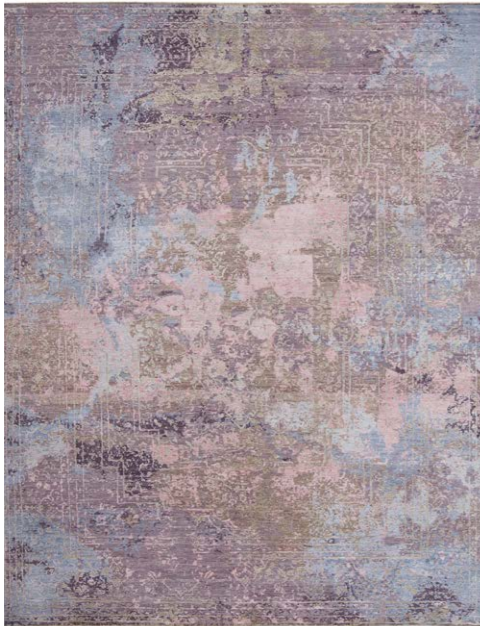
ELEMENTS - LIPI GREYS



ELEMENTS - STAR BORDER GREY



ELEMENTS - SMOKED TRANSITIONAL SAFFRON



ELEMENTS - SAVONNERIE PINK PURPLE



ELEMENTS - SAVONNERIE GOLD BLUE GREY



ELEMENTS - AZTEC TRANSITIONAL GREY TURQUOISE



ELEMENTS - SAVONNERIE SAFFRON BLUES



ELEMENTS - SAVONNERIE SAFFRON BLUES



ELEMENTS - STORMBORDER GREYS



ELEMENTS - SMOKED TRANSITIONAL SAFFRON



ELEMENTS DRAGONS



TVR

AUTUMN

This design represents a
scattered pattern of leaves
falling down during autumn time.

FROM 1695 EUR/M²



AUTUMN - ORANGES



AUTUMN - FB3 GREY



AUTUMN - YELLOWS



AUTUMN - LIGHT GREY GOLD



AUTUMN - BROWN BLUE



AUTUMN - GOLD



AUTUMN - PURPLE



TR

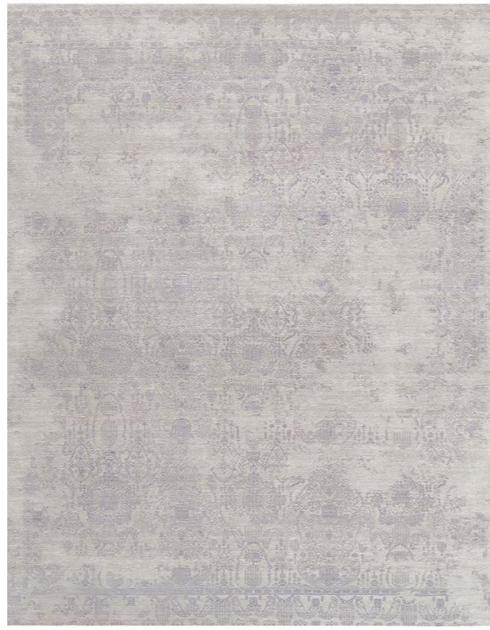
INSPIRATIONS

When simplicity
becomes an inspiration.

FROM 1695 EUR/M²



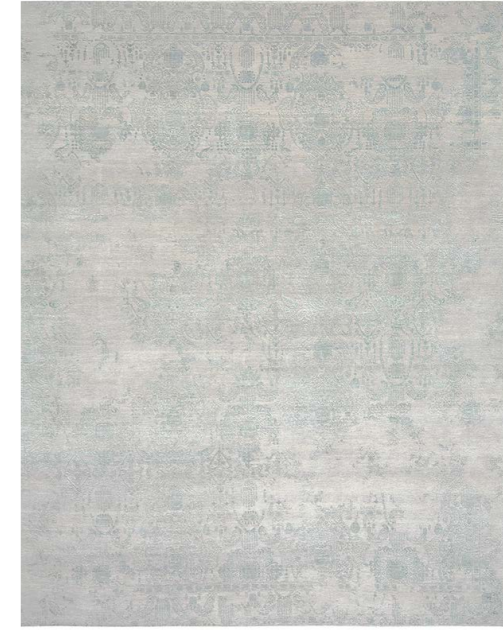
INSPIRATIONS - T3 GREY & BLUE



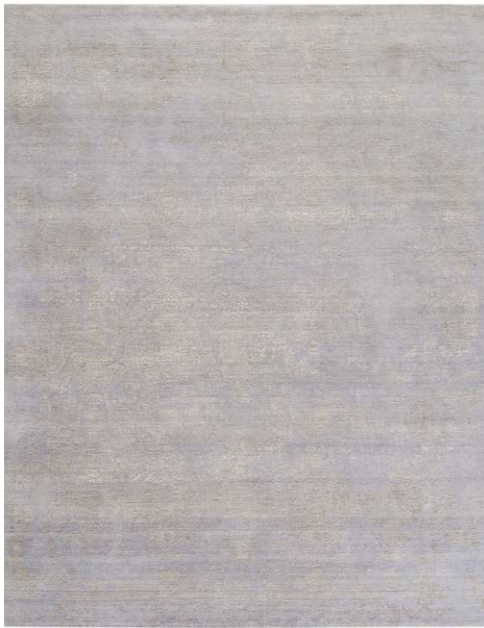
INSPIRATIONS - T3 SILVER DARK PURPLE



INSPIRATIONS - T3 AQUA BH 12



INSPIRATIONS - T3 BEIGE TEAL



INSPIRATIONS - T3 SILVER TK I6A



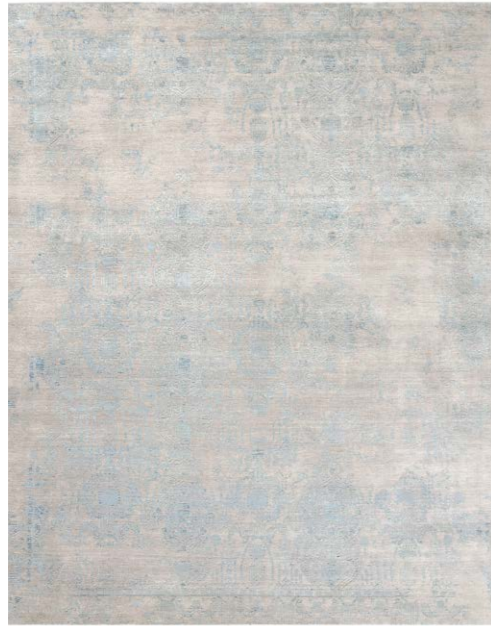
INSPIRATIONS - T3 GREY & RED



INSPIRATIONS - DARK GREY - SILVERS



INSPIRATIONS - T3 PURPLE LIME GREEN



INSPIRATIONS - T3 LIGHT GREY BLUE 2



INSPIRATIONS - T3 PLATINUM GREYS



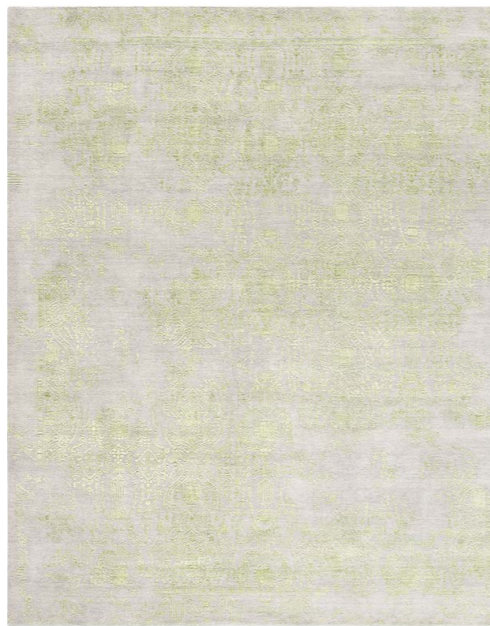
INSPIRATIONS - T3 MID GREY GOLD



INSPIRATIONS - LT-GREY LT-TEAL



INSPIRATIONS - T7A GREYS MULTI



INSPIRATIONS - T3 GREY & LIME GREEN



INSPIRATIONS - T3 GREY & ORANGE



INSPIRATIONS - T3 BEIGE TEAL



TR

ANCIENT

Our latest legendary
collection.

FROM 1950 EUR/M²



ANCIENT - 3C



ANCIENT - 3



ANCIENT - 2-AT



ANCIENT - 5



ANCIENT - 6C-1



ANCIENT - 2 GREY BLUE



ANCIENT - 6C-2



ANCIENT - 3CK-5



ANCIENT - 6C-2



ANCIENT - 5C-2



ANCIENT - VIRUSH K32 LT BLUE



ANCIENT - 4 BROWN GREY



ANCIENT - 2A CHARCOAL



ANCIENT - 4 AT IVORY



ANCIENT - 5C1 GREY



TR

MYSTIQUE

The mystique aura of these rugs
is very intriguing.

FROM 1695 EUR/M²



MYSTIQUE - CHROME



MYSTIQUE - GOLD



MYSTIQUE - RED



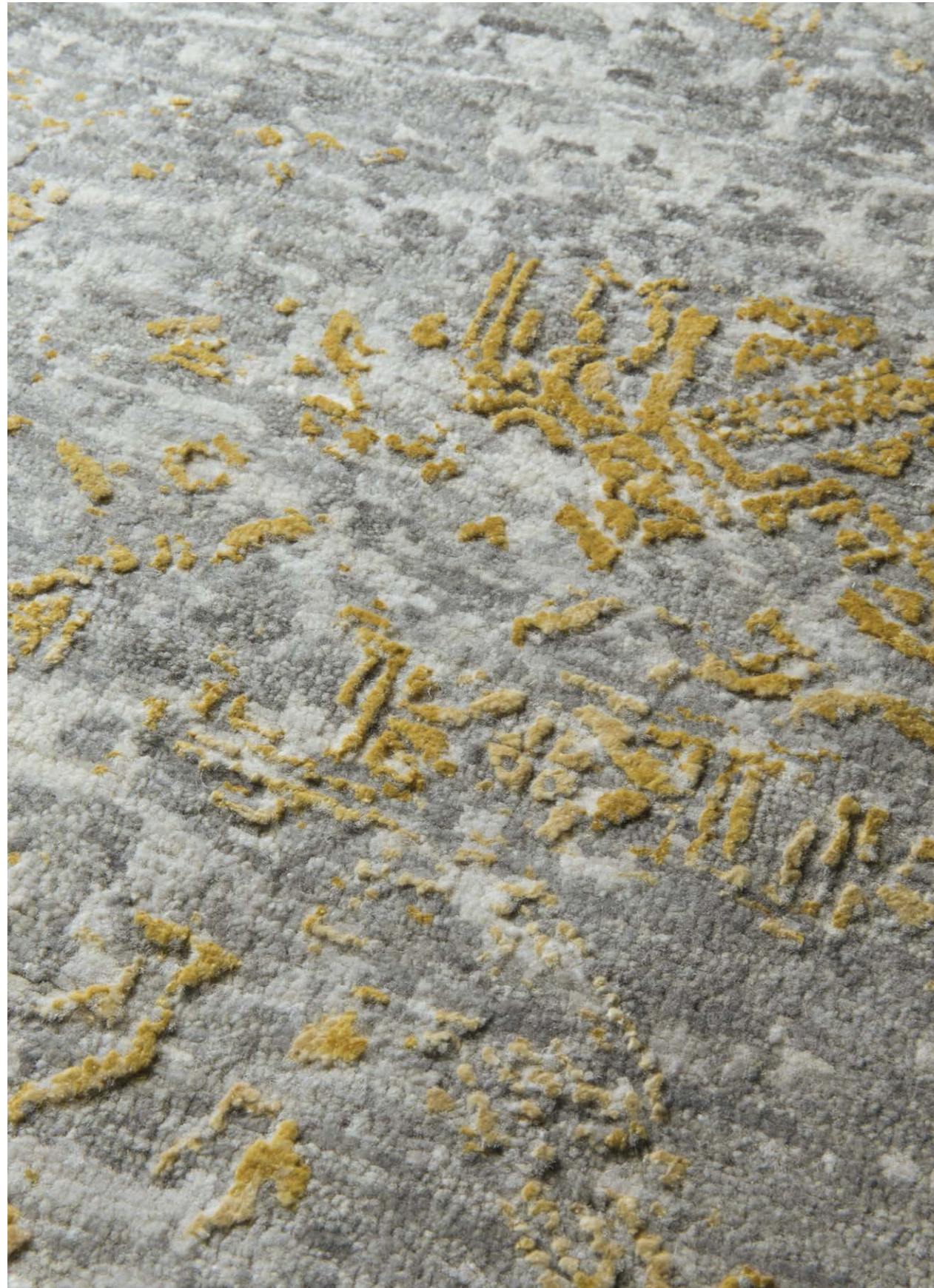
MYSTIQUE - GREEN



MYSTIQUE - PURPLE



MYSTIQUE - TURQUOISE



TR

KOHINOOR REVIVED

Our latest legendary
collection.

FROM 1695 EUR/M²



KOHINOOR REVIVED - BEIGE & BLUE



KOHINOOR REVIVED - CHARCOAL



KOHINOOR REVIVED - PINK



KOHINOOR REVIVED - PURPLE



KOHINOOR REVIVED - GOLD



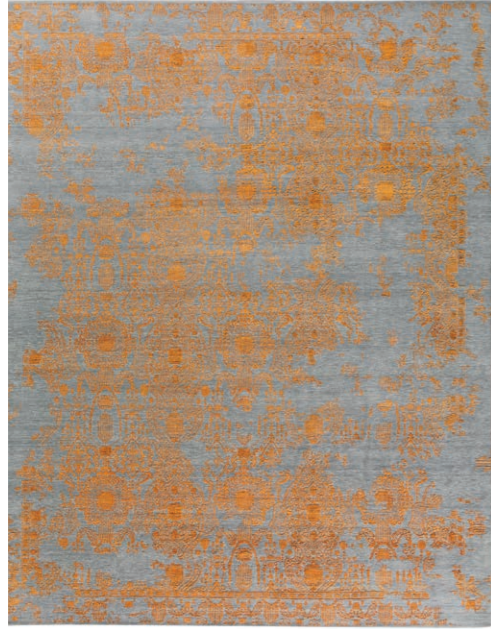
KOHINOOR REVIVED - GREEN



KOHINOOR REVIVED - WHITE & GREY



KOHINOOR REVIVED - SILK & GOLD



KOHINOOR REVIVED - GREY ORANGE



TR

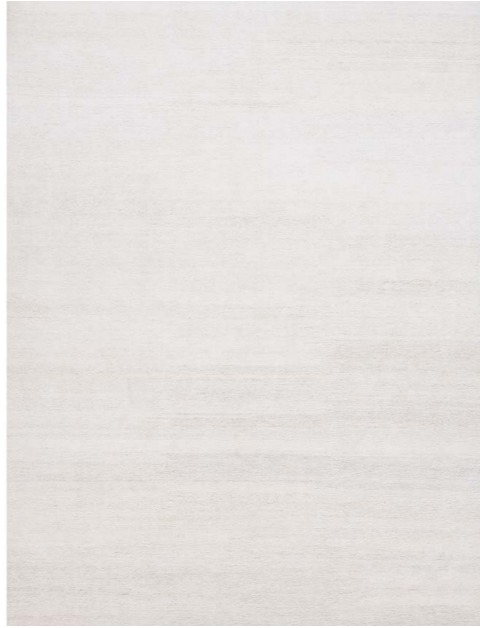
NATURE

Natural materials such as wool and nettle make for beautiful color shades

FROM 795 EUR/M²



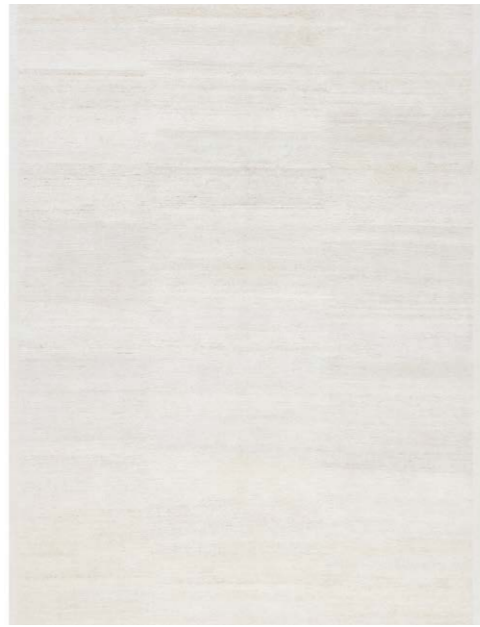
NATURE



NATURE - BLEACHED



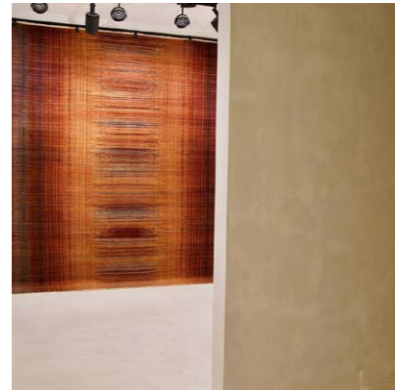
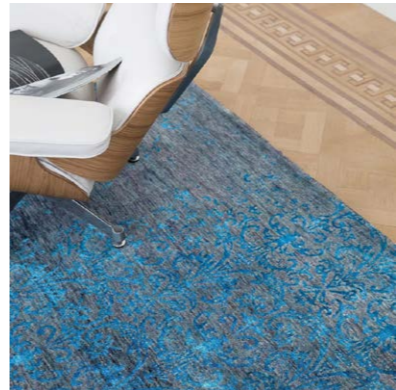
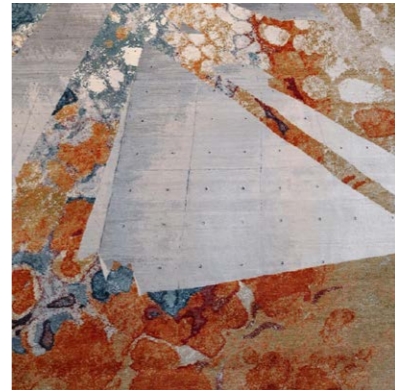
NATURE - BORDER



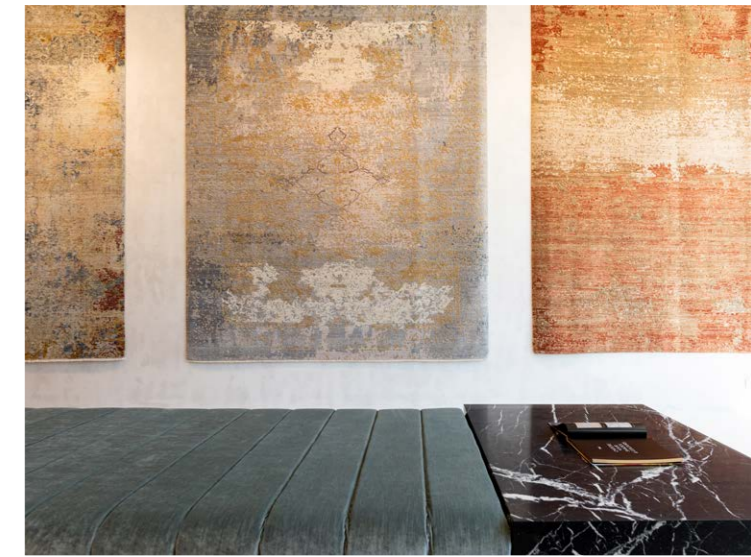
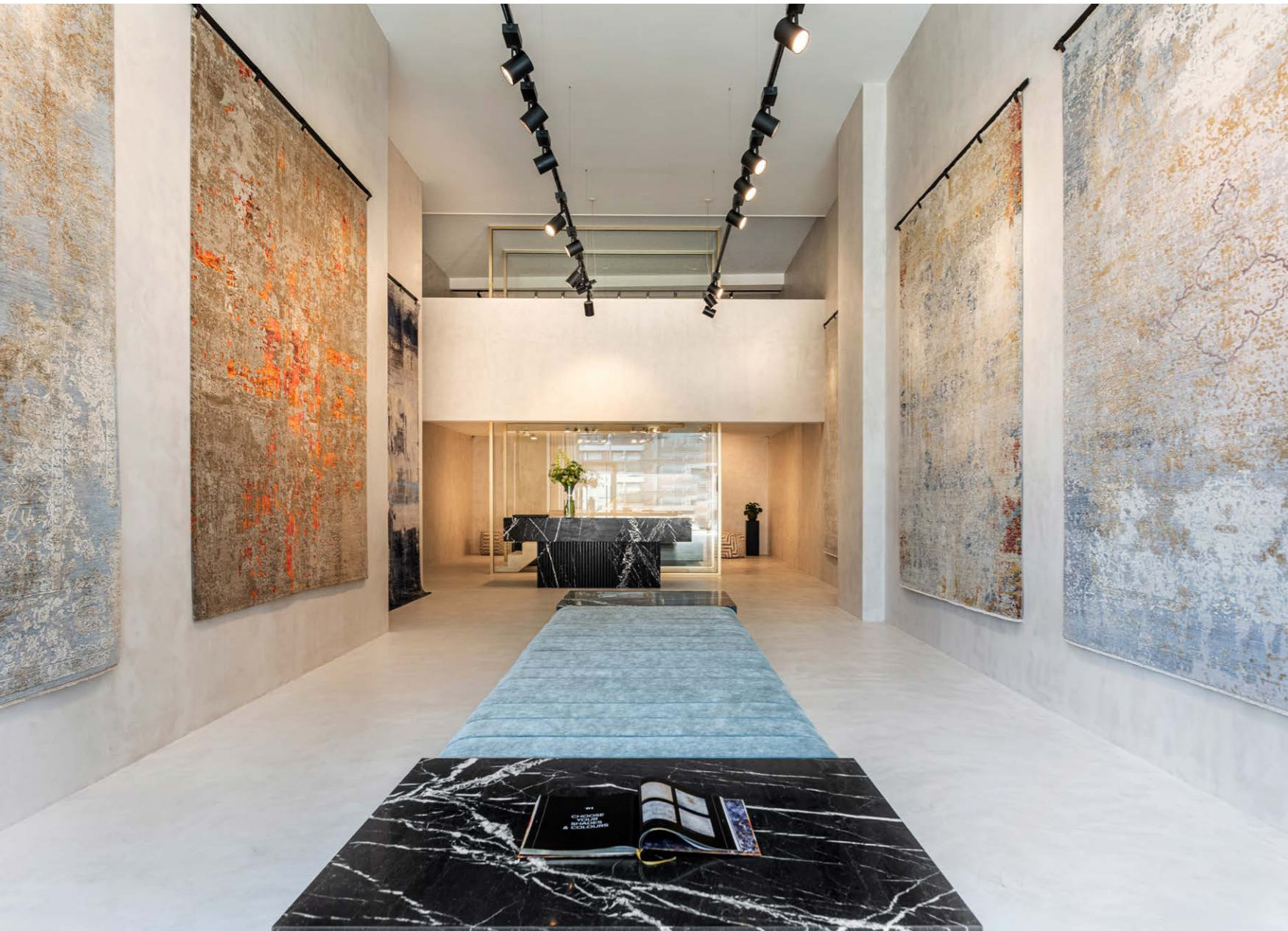
NATURE - BORDER BLEACHED

TVR

FOLLOW US
ON INSTAGRAM
[@THIBAULTVANRENNE](#)



COME AND VISIT OUR SHOWROOM



**THIBAUT VAN RENNE
FLAGSHIP STORE BELGIUM**

Noorwegenstraat 51
9940 Evergem (Belgium)

T. +32 (0)9 281 00 38
info@thibaultvanrenne.com

Tue. - Fri. 11:00 - 17:00
Sat. 11:00 - 18:00
Sun. By appointment only

TVR

—

WWW.THIBAULTVANRENNE.COM